



SERVICE BULLETIN

To: Hemisphere GNSS Dealers and End Users
From: Hemisphere GNSS
Date: 5/8/20
Reference #: HGNSS BNE SM APC SB1 (M Brook)

PRODUCTS AFFECTED:

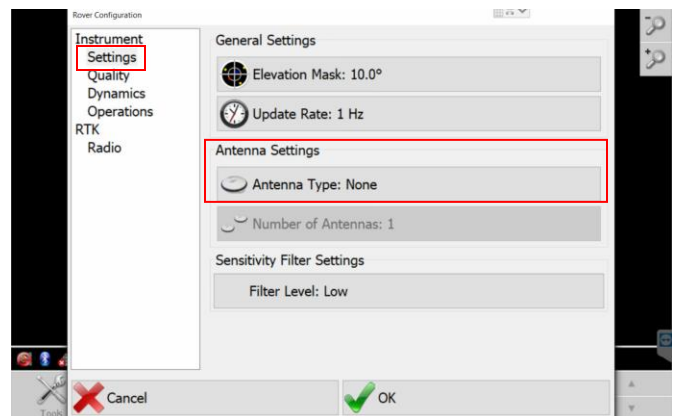
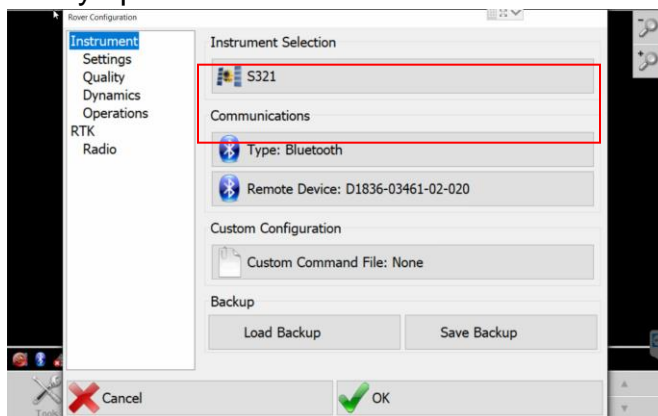
Hemisphere SiteMetrix Version 7.3.0 when being used with Hemisphere S321+ receiver

SCOPE:

There is currently a bug with SiteMetrix Version 7.3.0 where after selecting “S321” under the Instrument Selection tab when configuring a base or rover for the first time, the antenna phase center is not applied correctly. This function is supposed to automatically select the antenna type of HEMS321 in the “Settings” tab, which it does not.

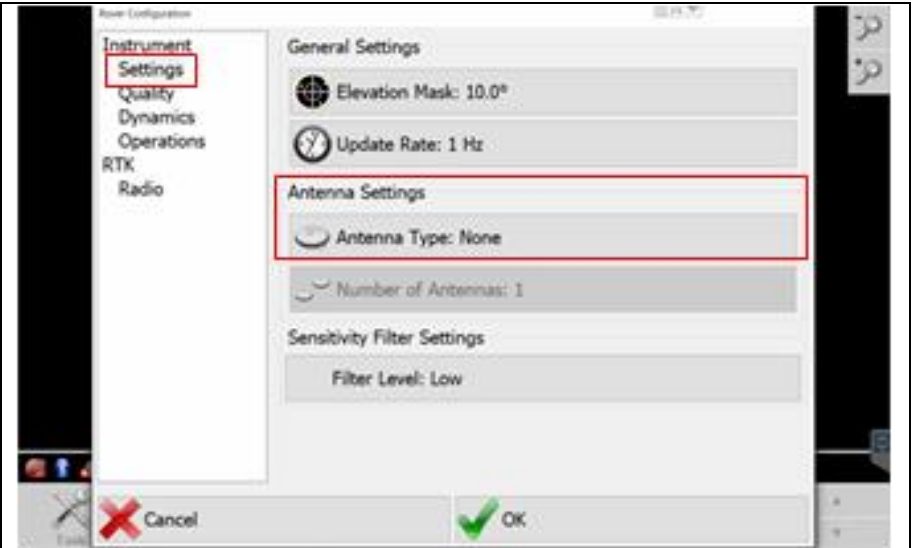
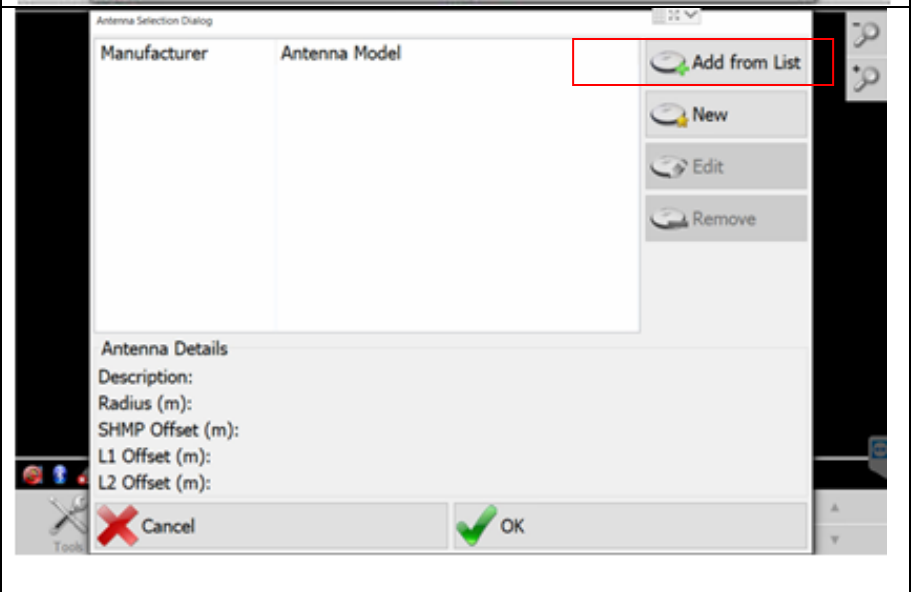
This has the potential to show height discrepancies (approx. 138mm) compared to existing control, and could also impact GradeMetrix machine calibrations. It can also impact base positioning if setting up over a known mark.

Symptom:

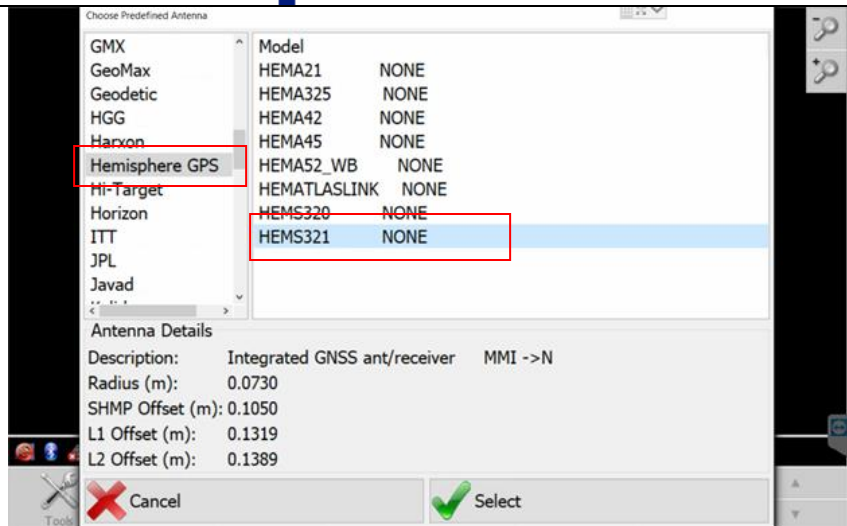


Solution:

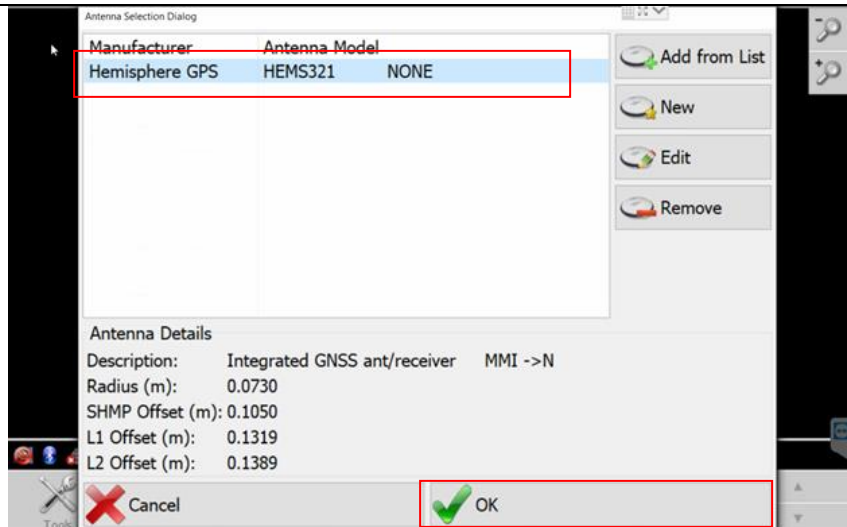
Manually enter the antenna model information when setting up SiteMetrix for the first time. This will only need to be done once. Follow the steps below.

| | |
|---|--|
| <p>Go to the Settings tab and press on Antenna Type under the Antenna Settings subheading</p> |  |
| <p>Select “Add from List” on the right hand side</p> |  |

Browse for “Hemisphere GPS” on the manufacturers list on the left hand window. Then, select HEMS321 if using S321/+ receiver, and press Select.

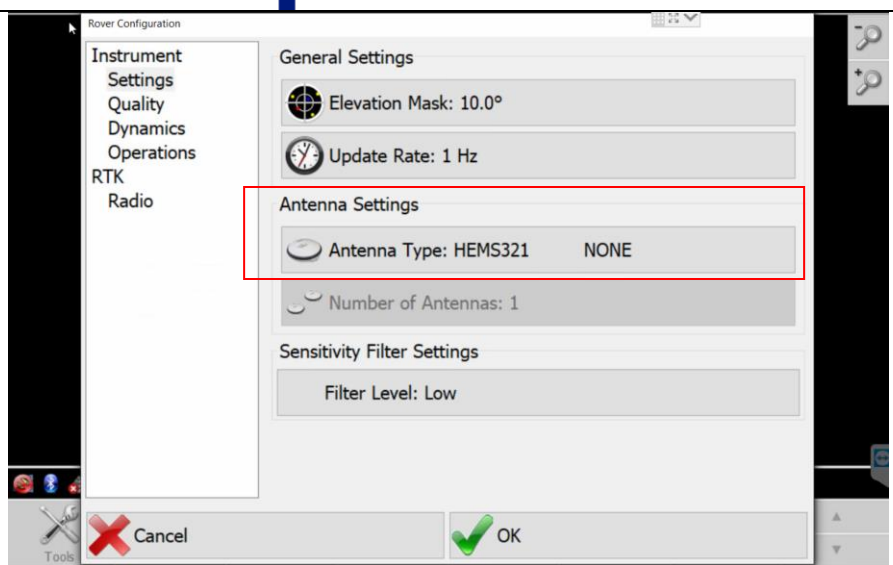


Ensure to highlight the newly-added HEMS321 antenna model on the previous screen, confirm the phase center information and other parameters are listed down the bottom and press Ok.





The Instrument settings tab should now contain HEMS321 as the Antenna Type.



FURTHER INFORMATION:

If you have any further questions, please contact Hemisphere GNSS technical service department at +1 (480) 348-6380. For support via email, please contact TechSupport@HGNSS.com or consult WWW.HGNSS.COM for the latest HGNSS product and software information.

This document is provided for technical support purposes only.
Please refer to the product documentation for warranty, license and
safety information associated with the product.