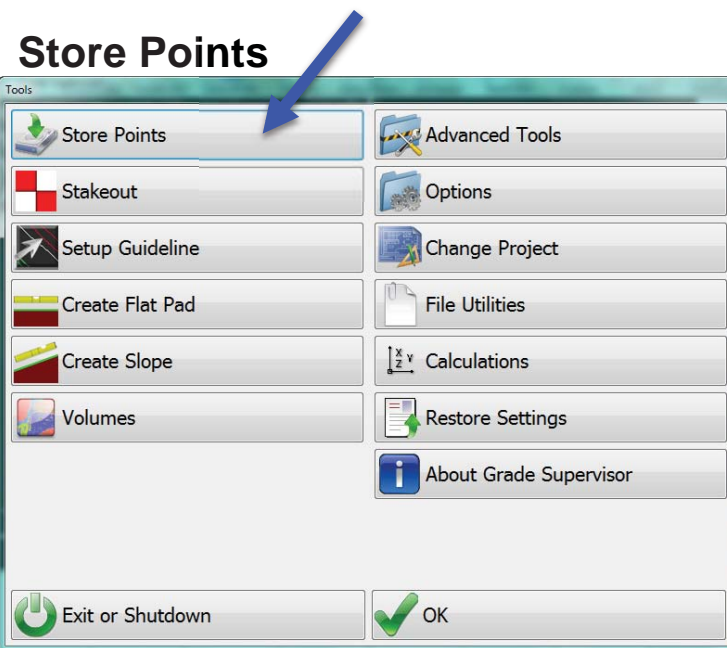


### Tools Menu

The Tools menu contains many features that may be commonly used in Grade Supervisor. Some of these are advanced and are only used when setting up and configuring Grade Supervisor. Others, like Store Points, may be routinely used by an operator.

### Store Points

The Store Points routine captures points (Topo) by interval and/or by single shot. In most landfill applications, this routine will be used to store the location of asbestos or other hazardous materials. Go to Tools > Store Points (or the option to have this button appear on the bottom toolbar is available).



The Store Points button brings up the Store point Configuration Dialog. Here you will select or create filename, location to store point, auto-store settings, etc. Details for each setting are described below.

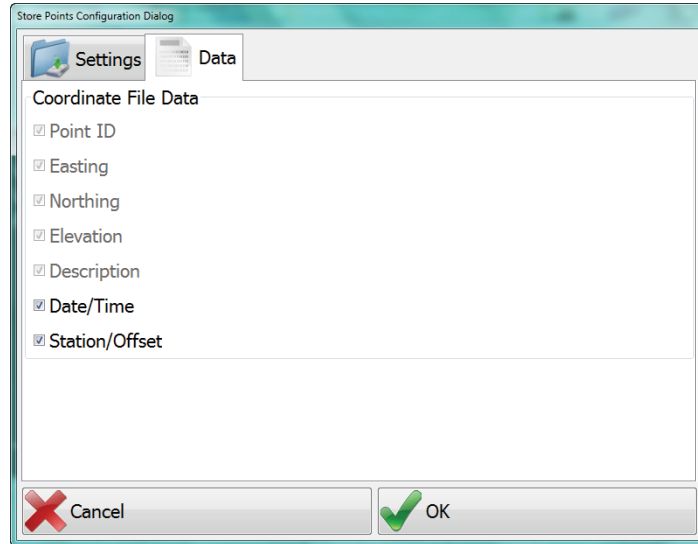
## Settings

The screenshot shows the 'Store Points Configuration Dialog' with the 'Settings' tab active. The fields are as follows:

- Coordinate File:** A button with a folder icon.
- Store Point At:** A button with a location pin icon, currently set to 'Rod'.
- Description:** A text input field.
- Prompt for Description:** An unchecked checkbox.
- Starting Point ID:** A button with a '#' icon, set to '1'.
- Auto-Store Points By:** A button with a clock icon, set to 'Time'.
- Time Interval:** A button with a clock icon, set to '10.0sec'.
- Buttons:** 'Cancel' (with a red X icon) and 'OK' (with a checkmark icon) at the bottom.

1. **Coordinate File:**
  - ⇒ Press the Coordinate File button to choose from existing list of files or to create a new coordinate filename to store points to. Once you have created a new filename if this is what you choose to do, the filename will be available next time you press the Coordinate File button to choose from list of filenames.
2. **Store Point At:**
  - ⇒ Cycle through available options by pressing the Store Point At: button. Options are Center, Left, and Right (Dozer Blade), ALL points, or Tracks (True GPS – directly under GPS antenna at track elevation).
3. **Description:**
  - ⇒ Enter a description that will be attached to each stored point. The description will remain in each of future stored points within the current filename until the description is changed or a new file is loaded or created. For example, “Ground Shots” is a common description when collecting a topo survey of an existing terrain. (surface)
4. **Prompt for Description:**
  - ⇒ Check or uncheck if you would like to be prompted for a new description each time a point is stored.
5. **Starting Point:**
  - ⇒ Enter the starting point number you would like to see when storing the first point of the file.
6. **Auto-Store Points By:**
  - ⇒ Time:
    - Enter the time by seconds you wish to capture (store) points when auto-store is enabled from the main Store Points screen.
  - ⇒ Distance:
    - Enter the distance you wish to capture (store) points when auto-store is enabled from the main Store Points screen.

## Data



Data describes what information is present in each stored point. Optional data that can be attached to the end of each point are selectable with check marks. Default information that cannot be changed or edited are:

Point ID, Easting, Northing, Elevation, Description,...

Additional information that can be attached to the end of each point include

1. Date/Time  
⇒ The Date and Time of each stored point
2. Station/Offset  
⇒ Station number and offset of each stored point

